

Security Evolves into Elegant Technology



Tactile activation and touch
screen interface

Multiple ID verification methods
(Pin Code / Access Card / Fingerprint / Key)



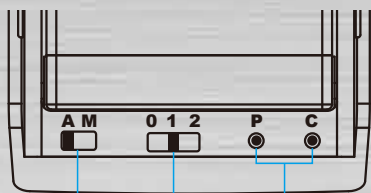
Fire-rated for CNS (Taiwan)
and GB 12955 (China)

Voice guide (can be
switched mute / normal / louder)

Manufactured to a wide range of door thickness
from 1-3/8 – 3-5/16" (35 – 85mm)

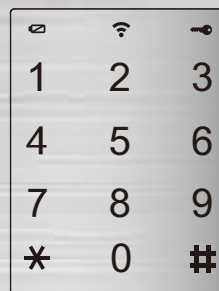


Interior control panel



- | | | |
|--------------|---------------|-----------------------------------|
| Locking Mode | Volume Switch | Register Button |
| A : Auto | 0 : Mute | C : Register User Card |
| M : Manual | 1 : Normal | P : Register User Pin Code |
| | 2 : Louder | C + P : Register User Fingerprint |

Status Indicator

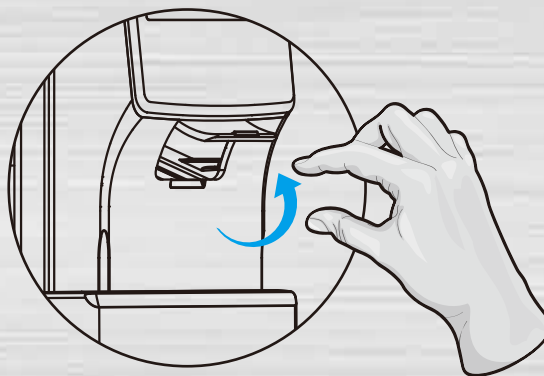


- Low Battery Indicator
- Operation Indicator
- Access Prohibited

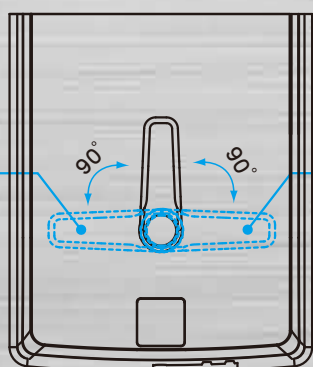


Night latch

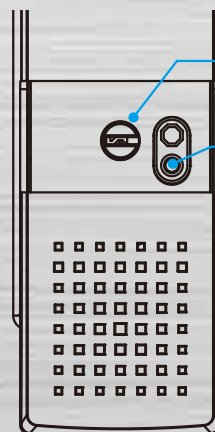
Flip up to reach fingerprint scanner



Night latch on



Night latch on



Mechanical Key Override

Emergency power supply by 9V battery

Slide down

TPN01 (31 Series and 41 Series)



User code capacity : 32 (4 to 8 digits each, must be programmed with an access card)

Access card capacity : 32 (Each card can be paired with a user code)

Fingerprint capacity : 200

Key : 2

Dimension : Exterior lock assembly : 345mm x 75.2mm x 62.3mm (with lever)
Interior lock assembly : 345mm x 75.2mm x 62.3mm (with lever)

Finish : Two-tone Black and Silver

Door bore hole : 2-1/8" (54mm) or 1-1/2" (38mm)

Door thickness : 45 to 85mm (standard)
35 to 85mm (with optional base plates)

Backset : 70mm (standard) or 60mm (optional)

Touch screen back-light color : Blue

Power supply : DC 6V (Four AA 1.5V alkaline batteries)

Operation temperature : -20°C to 60°C
(Temperature tolerance could vary due to different weather conditions)

Memory : Volatilization-free memory module (permanent data storage
without re-programming after battery replacement)

Daily Convenience ➤

- ▶ Multiple access function (User Pin Code / Card / Fingerprint / Mechanical Key)
- ▶ Tactile activation and touch screen interface
- ▶ Voice guide (can be switch mute / normal / louder)
- ▶ Volume control (gradational options and mute mode)
- ▶ Auto lock selector (can switched to enable / disable)
- ▶ Low battery indicator
- ▶ Mechanical key override

◀ Uncompromised Security

- ▶ Fire-rated for CNS (Taiwan) and GB 12955 (China)
- ▶ Lift-and-Lock mechanism – easy and assured manual locking method
- ▶ Night-latch design assures zero exterior entry when switched on
- ▶ Panic-proof lever design – turn the interior lever for egress in emergency
- ▶ Four-digit guiding code (prevents code-probing by increasing fingerprints on the touch screen)
- ▶ Touch screen is disabled after three consecutive incorrect user code entries

Easy Installation ➤

- ▶ Manufactured to a wide range of door thickness from 1-3/8 – 3-5/16" (35 – 85mm)
- ▶ Voice-guided programming process
- ▶ Graphic step-by-step installation instruction
- ▶ Graphic step-by-step user manual



Dealer Contact Information :